

DOBRŮ

THE PERFECT MATS FOR YOUR COWS



Dobro cow mats imitates the natural ground and increase the resting comfort of cows. Thanks to the application of top-quality materials, they serve as a perfect insulation base and reduce the costs of bedding. Special construction as well as an anti-slip surface of the mat reduces the risk of joint and hoof injuries, which means a significant increase of milk production. Using rubber mats also makes easier the cleaning of the cowshed, which is directly reflected in the well-being of cattle.

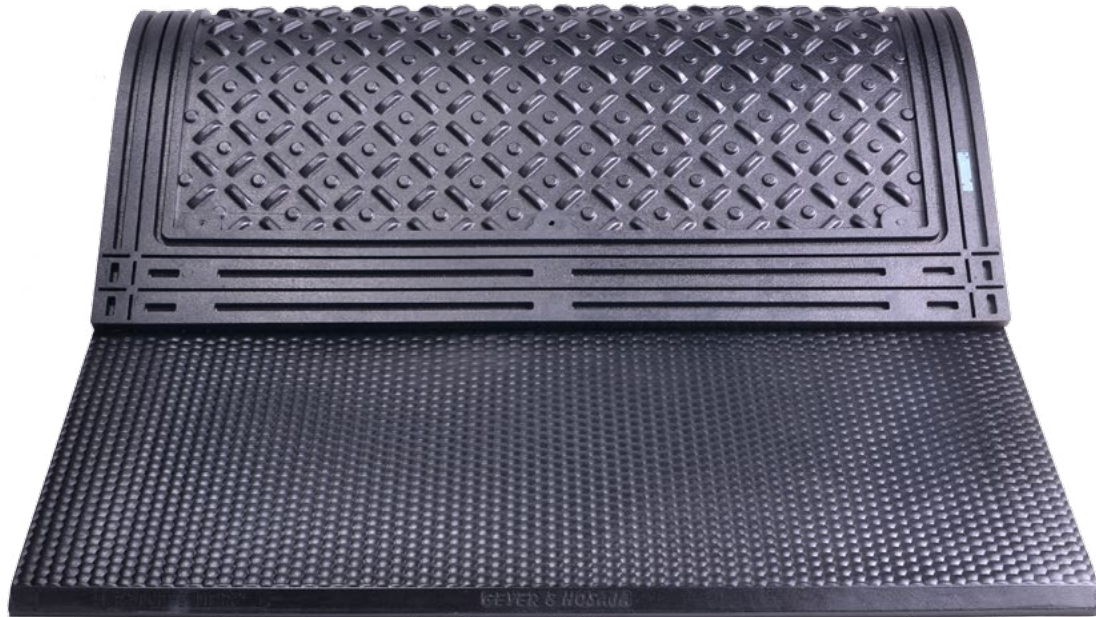
Each mats are tested by DLG, an independent research institute (Center for Testing of Agricultural Products and Technologies), to ensure the quality of these following:

- Deformability and elasticity
- Permanent tread load
- Abrasion resistance
- Slip resistance



Geyer & Hosaja modern manufacturing facility in Poland

BEST VALUE FOR MONEY



- **Model DB1.2 for free or tie stall**

- Increase resistance to deformation
- Design to provide comfort and thermal insulation
- Tilted edge makes it easier to get onto the mat
- Anti-slip surface
- Possible to adjust dimensions by cutting
- Predrilled anchor holes in front of the mat
- Comes with anchors
- Sizes:
 - 47" width x 71" long x 1 1/8" thick (120 cm x 180 cm x 28 mm)
weight 115 lbs (52 kg)
 - 51" width x 71" long x 1 1/8" thick (130 cm x 180 cm x 28 mm)
weight 125 lbs (57 kg)
- 10-year warranty



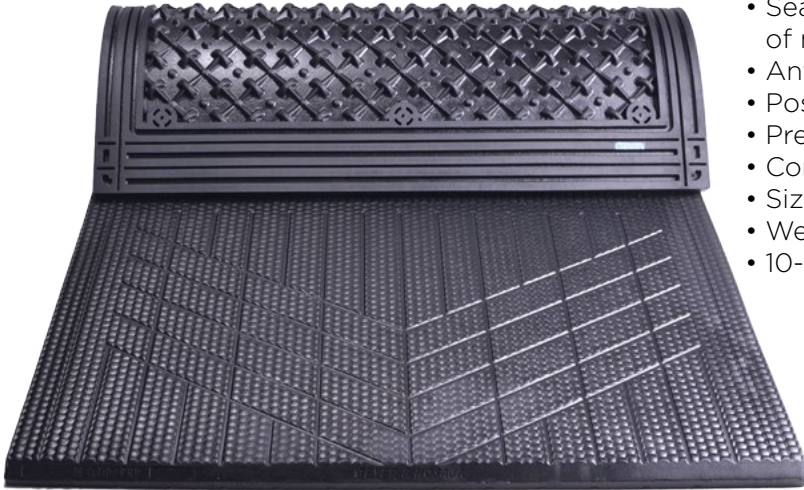
- + Penetration depth: 9,4 mm (1/4")
- + Abrasion: negligible wear
- + Slip resistance on dry and wet: good
- + Stress test with 100 000 treads: no appreciable wear and no lasting deformation

- **Model DB-T**

- T-Bar that seal the space between the mats
- Stabilize the mats
- Easier to keep the stall clean
- Anti-slip surface
- Predrilled anchor holes



GROOVES FOR DRAINAGE



- **Model DB1.4 for free stall**
- Advanced rubber formulation which increase cow comfort
- Grooves and slope in the rear part of the mat allow liquids to be drained
- Sealing lips (bottom surface perimeter) restricts entry of moisture and debris
- Anti-slip surface
- Possible to adjust dimensions by cutting
- Predrilled anchor holes in front of the mat
- Comes with anchors
- Size: 47" width x 71" long x 1 1/4" thick (120 cm x 180 cm x 32 mm)
- Weight 114 lbs (52 kg)
- 10-year warranty



0,5° slope on 1/3 mat's length



- + Penetration depth: 15,4 mm (1/2")
- + Abrasion: negligible wear
- + Slip resistance on dry and wet: good
- ++ Stress test with 100 000 treads: no appreciable wear and no lasting deformation



THE SOFTEST MAT

- **Model DB1.6 for free stall**

- Advanced rubber formulation which increase cow comfort
- Tilted edge makes it easier to get onto the mat
- Sealing lips (bottom surface perimeter) restricts entry of moisture and debris
- Anti-slip surface
- Possible to adjust dimensions by cutting
- Predrilled anchor holes in front of the mat
- Comes with anchors
- Size: 47" width x 71" long x 1 1/4" thick (120 cm x 180 cm x 32 mm)
- Weight 117 lbs (53 kg)
- 10-year warranty



- **Model DB1.6 in a roll for free stall**

- Roll of 71" width up to 115' long
(1,8 meter width x 35 meters long)



- + Penetration depth: 17 mm (5/8")
- + Abrasion: negligible wear
- + Slip resistance on dry and wet: good
- ++ Stress test with 100 000 treads:
no appreciable wear and no lasting deformation

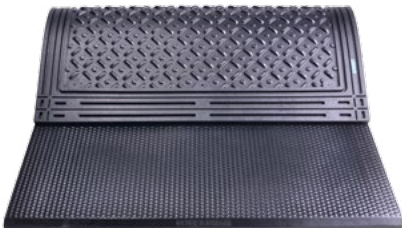


MORE MATS FOR STALLS AND SLATTED FLOORS



• DB1.1 Model for free stalls

- Mat with increase durability and resistance to deformation
- Design to provide comfort and thermal insulation
- Tilted edge makes it easier to get onto the mat
- Anti-slip surface
- Possible to adjust dimensions by cutting
- Predrilled anchor holes in front of the mat
- Comes with anchors
- Size: 47" width x 71" long x 11/16" thick (120 cm x 180 cm x 18 mm)
- Weight: 113 lbs (51 kg)
- 10-year warranty



• DB1.3 Model for free or tie stalls

- Deformation resistant
- Design to provide comfort and thermal insulation
- Tilted edge makes it easier to get onto the mat
- Anti-slip surface
- Possible to adjust dimensions by cutting
- Predrilled anchor holes in front of the mat
- Comes with anchors
- Size: 47" width x 71" long x 7/8" thick (120 cm x 180 cm x 22 mm)
- Weight: 113 lbs (51 kg)
- Warranty for tie stalls: 5 years
- Warranty for free stalls: 10 years



• DB1.5 Model for free stalls

- Penetration depth of 9,8 mm (1/4")
- Design to provide comfort and thermal insulation
- Grooves and slope in the rear part of the mat allow liquids to be drained
- Anti-slip surface
- Possible to adjust dimensions by cutting
- Predrilled anchor holes in front of the mat
- Comes with anchors
- Size: 47" width x 71" long x 1" thick (120 cm x 180 cm x 25 mm)
- Weight: 115 lbs (52 kg)
- 10-year warranty



• DB-S for Slatted floors

- Design to provide comfort and thermal insulation
- Imitates the natural substrate
- Anti-slip surface
- Fast and easy assembly
- The size can be adjust according to an individual order
- Size: width and lenght depending on project
Thickness: 11/16" and 15/16" (18 mm and 24 mm)
- 5-year warranty

MILKING PARLOUR, WAITING ROOM, CORRIDORS, UNDER MANURE COLLECTOR

These mats imitates the natural ground and increase resistance to deformation. They have an anti-slip surface and are fast and easy to assembly. The size can be adjust according to an individual order. They protect against laminitis.

• DB2.1 Model

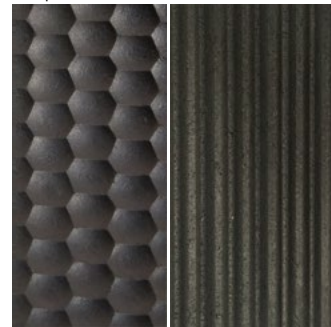
- Sizes:
- 41" width x 20" long x 15/16" thick (104 cm x 51 cm x 24 mm)
- 41" width x 41" long x 15/16" thick (104 cm x 104 cm x 24 mm)
- 41" width x 61" long x 15/16" thick (104 cm x 155 cm x 24 mm)
- Weight: more or less 113 lbs (51 kg)
- 5-year warranty



- + Penetration depth: 9,4 mm (3/8")
- + Abrasion: negligible wear
- + Slip resistance on dry and wet: good
- + Stress test with 100 000 treads: no appreciable wear and no lasting deformation



Top view Under view



• DB2.4 Model

- Size: 47" width x 79" long x 11/16" thick (120 cm x 200 cm x 18 mm)
- Weight: 118 lbs (54 kg)
- 5-year warranty

• DB2.5 Model

- Size: 47" width x 79" long x 15/16" thick (120 cm x 200 cm x 24 mm)
- Weight: 118 lbs (54 kg)
- 5-year warranty



Top view Under view



• DB2.7 Model for boxes, stands, passage, carousel

- Size: 43" width x 63" long x 15/16" thick (110 cm x 160 cm x 24 mm)
- Weight: 110 lbs (49 kg)
- 5-year warranty

Head office

**Geyer & Hosaja
Partynia 12
39-310 Radomysl Wielki
Poland
www.dobroagro.pl**

Canadian distributor

**Agriclé
416, Saint-Pie Rd
Saint-Dominique (Quebec)
J0H 1L0 Canada
www.agricle.com/en
info@agricle.com**

1 888 773-3130



A G R I C L É