

AGRI-PLASTICS

The Calf Housing Specialist

SHIELD YOUR INVESTMENT



GROWTH BEGINS HERE
PRODUCT CATALOG



THERE'S A HISTORY BEHIND OUR PRODUCTS.

The VanBuurens know first-hand the challenges involved in raising healthy dairy calves. As third-generation dairymen they began experimenting with hutch designs to provide a healthier, more comfortable environment for calves while improving efficiencies for their business. In 1995, they founded Agri-Plastics to provide local dairy farmers with a better option for housing and caring for the next generation of milkers.

Over the years, Agri-Plastics listened and learned as other producers talked about their own calf housing challenges. And they responded with game-changing innovations that have since become industry standards.

2 Today, Agri-Plastics hutches are prized the world over for their unique durability, efficiency and ease of use. But at the heart of it all is a family true to its roots, delivering proven calf housing systems for dairy farmers, by dairy farmers.

We understand the value of your calves, and we're dedicated to helping you shelter your investment.



Rob and Darren VanBuuren



DESIGNED FOR FARMERS, BY FARMERS

FOCUS ON

5

REDUCED CALF MORTALITY THROUGH FOCUS ON 5.

Agri-Plastics seeks to maximize animal welfare by focusing on 5 life-sustaining attributes of good calf housing. By developing our hutches with these attributes in mind, we are helping you improve the way you dairy.

Why grow your business with Agri-Plastics?

ENGINEERED FOR DURABILITY.

Rugged Agri-Plastics products are uniquely manufactured to withstand punishing weather extremes along with everyday wear and tear, calf after calf, year after year. The 10-year warranty on our calf hutches is proof of our commitment to durability.

EASIER ON CALVES, CREW AND YOU.

Because life on a dairy is rough enough, Agri-Plastics calf hutches are designed for maximum simplicity and ease of use at every stage, from assembling to cleaning. See pages 14-15 for our exclusive "Slide 'n' Go" Flex-Pen feature!

"We selected Agri-Plastics for our new expansion at Milk Source. Agri-Plastics was the BEST CHOICE for us because of their well renowned superior ventilation, durability and features."

—Ermith Ocampo, Milk Source



1 VENTILATION

Agri-Plastics calf housing products are designed to maximize fresh airflow while minimizing ammonia for improved calf health and comfort.

2 BEDDING

Your calves enjoy a cleaner, healthier environment, thanks to our unique bedding doors which enable quick and easy access for bedding.

3 TEMPERATURE

In all Agri-Plastics calf housing products, the temperature is always comfortable. We have designed our products with the calves in mind. There is plenty of airflow in our hutches and pens, allowing the temperature to be at a consistent rate all the time.

4 FEEDING

Agri-Plastics calf products are engineered to optimize food intake and safety, from colostrum to concentrate.

5 MANAGEMENT

When you're backed by **The Calf Housing Specialist**, managing your investment is easier and more cost-effective than ever!



CALF HOUSING SELECTION GUIDE

Our hutches are built to last, while saving you time and maintaining herd health. Our innovations are based on our own experiences raising calves and decades of experience in calf rearing.

Climate Control

Whether you live in extreme heat or bitter cold, your particular climate will affect which features matter most to you and your calves' health. That's why Agri-Plastics offers hutches with right or left offset doors or full openings to accommodate varying climates.

Built for Your Operation

At Agri-Plastics, we understand that calf housing is never "One Size Fits All." What works for a small dairy most likely will not work for a large operation, so we offer a variety of options and sizes to make sure you can find the best fit for your operation.

4



HOUSING OPTIONS

Regardless of your facility's setup and calf needs, Agri-Plastics has the solutions to shelter your investment.



STARTER PEN

Set directly on the ground or use our optional Elevated or Movable Starter Pens.



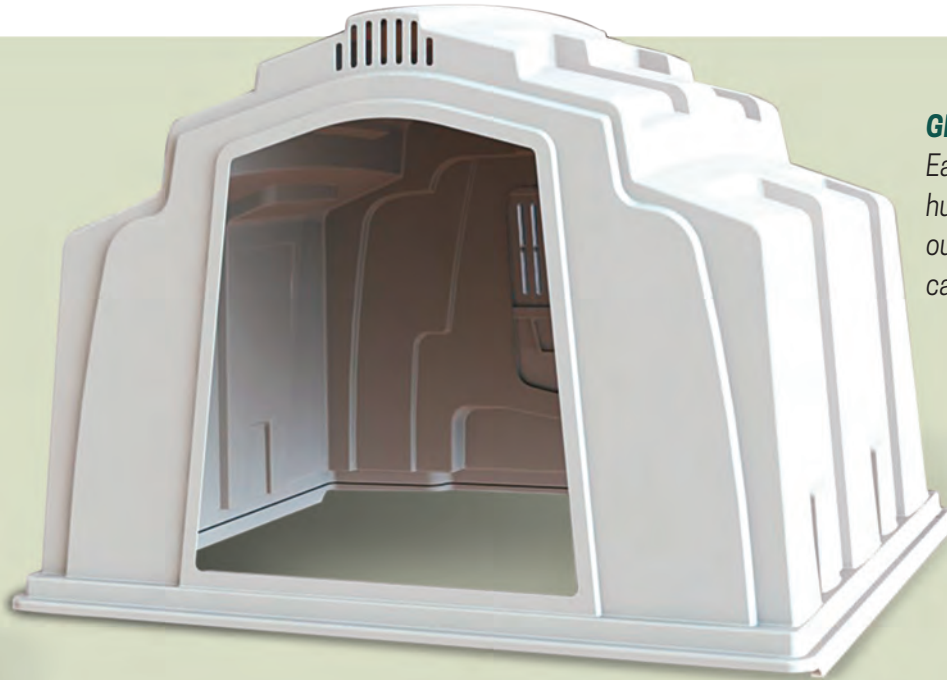
FLEX-PEN

This innovative solution to calf housing allows calves to be housed individually or grouped together via the easily detachable center panel.

Find the right Agri-Plastics product for your operation.

GROUP HUTCH

Ease your calves' transition from hutches to group housing by using our group hutches. Helps reduce calf stress.



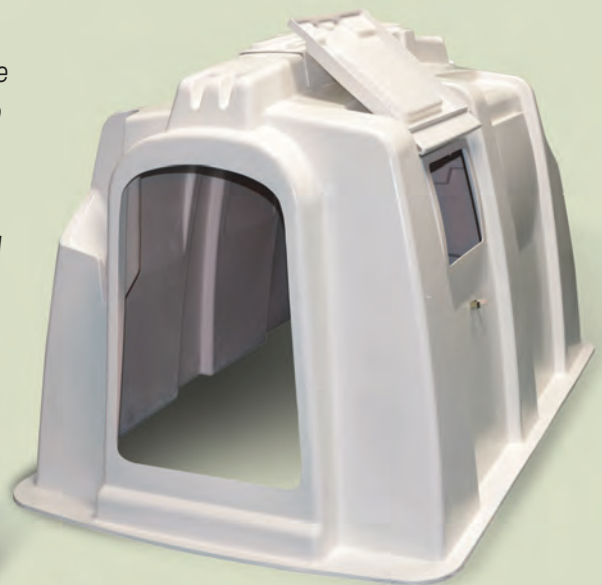
CALF HUTCH

The Deluxe SSL Space Saver Calf Hutch works well for shorter periods of time or smaller calves. Facilitates airflow, comfort and cleanliness.

For standard growth periods of 6 to 8 weeks of age, turn to the Deluxe SL Standard Length Calf Hutch. Most popular for weaned calves up to 8 weeks. Choose between side or rear feeding options.

The Deluxe EXL Extra-Large Calf Hutch accommodates longer growth periods of 8 to 12 weeks of age. The rear of the hutch stays dryer and warmer on cool days, providing better protection from wind, rain and snow.

Deluxe EXL Calf Hutch



Deluxe SL Calf Hutch



Deluxe SSL Space Saver Calf Hutch



CALF HUTCH*

SELECTION GUIDE

Our Rugged Calf Hutches

are engineered to not only shelter your livestock, but to dependably serve you, even after years of rough daily use. Choose from three models - the Deluxe SSL, Deluxe SL and Deluxe EXL - each available either on its own or as part of a complete Calf Rancher System. All systems come ready to use with airflow vents, 3-In-One rear door, outside feeding station, two poly buckets and a galvanized wire fence. It's no wonder our hutches and systems are used by some of the world's largest farms to shelter, protect and grow their investments.

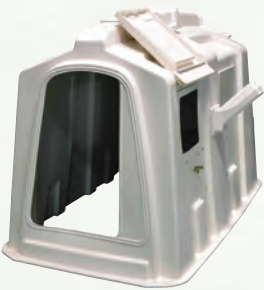
* Patented and Patents Pending

Deluxe SSL / Calf Rancher Systems**

6



Deluxe SL / Calf Rancher Systems**



Deluxe EXL / Calf Rancher Systems**



**Fence mount bottle holder not included on all rancher systems

STANDARD FEATURES

3-IN-ONE REAR DOOR



EASY LOADING



INSIDE FEEDING STATION



BOTTOM AIRFLOW VENTS



STAY-OPEN DOOR



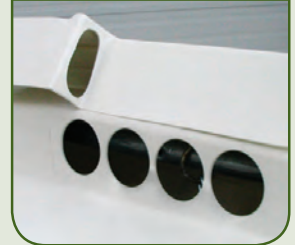
MANGER & BUCKETS



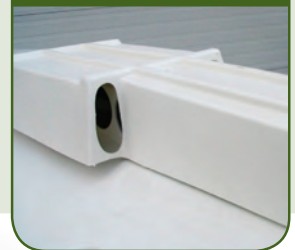
Agri-Plastics Calf Hutches are built tough enough to handle the most demanding operations.



EXPOSED ROOF VENTILATION



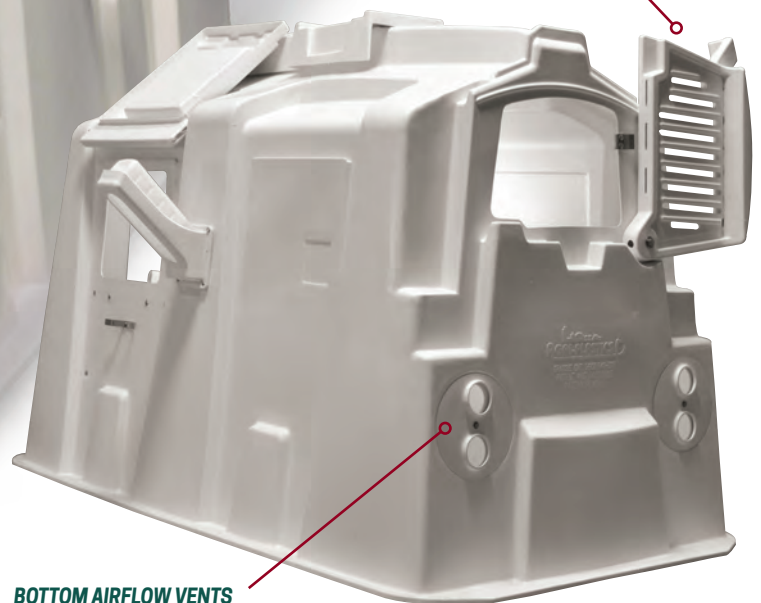
CLOSED ROOF VENTILATION



EASY CLEANING



3-IN-ONE REAR DOOR



WHAT SETS OUR CALF HUTCHES APART

The only rear door that does three things: ventilation, bedding and the option to rear feed. Agri-Plastics 3-In-One Rear Door also has a built-in leaning edge for easy cleaning. This prevents the hutch from falling over when pressure washing. Only one person required for cleaning.



GROUP HUTCHES*

Stress can be detrimental to calf health and growth. Our Group Hutches were designed to ease the transition from individual to group housing, and to make it easier for your crew to provide the best care.

Swing-Up Rear Bedding Door

makes it easier to add bedding, facilitating cleaner housing and healthier calves.

Ridge Ventilation

with a Grill Vent in the front and a Rear Top Rotary Vent you can use to control the airflow.

Molded In One Piece

for superior strength that will withstand tough conditions.

8 Our group hutches have no seams, no rivets and no points of weakness.

Integrated Poly Skid

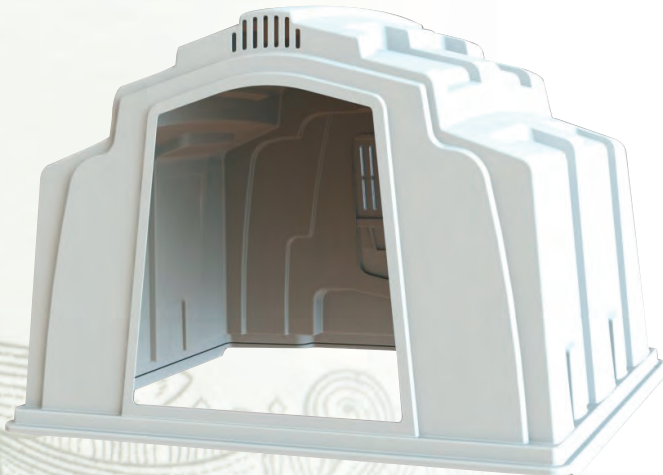
will not freeze to the ground the way wood skids do.

Other Great Features

include extra hutch height that accommodates longer growth periods, multiple vents for optimal ventilation and a truly opaque design.

At Agri-Plastics, we stand behind our hutches. With a 10-year limited warranty, they are the only serious choice.

* Patented



STANDARD FEATURES

SWING-UP REAR BEDDING DOOR*



MANUAL FEED



MECHANICAL FEED



INTEGRATED POLY SKID



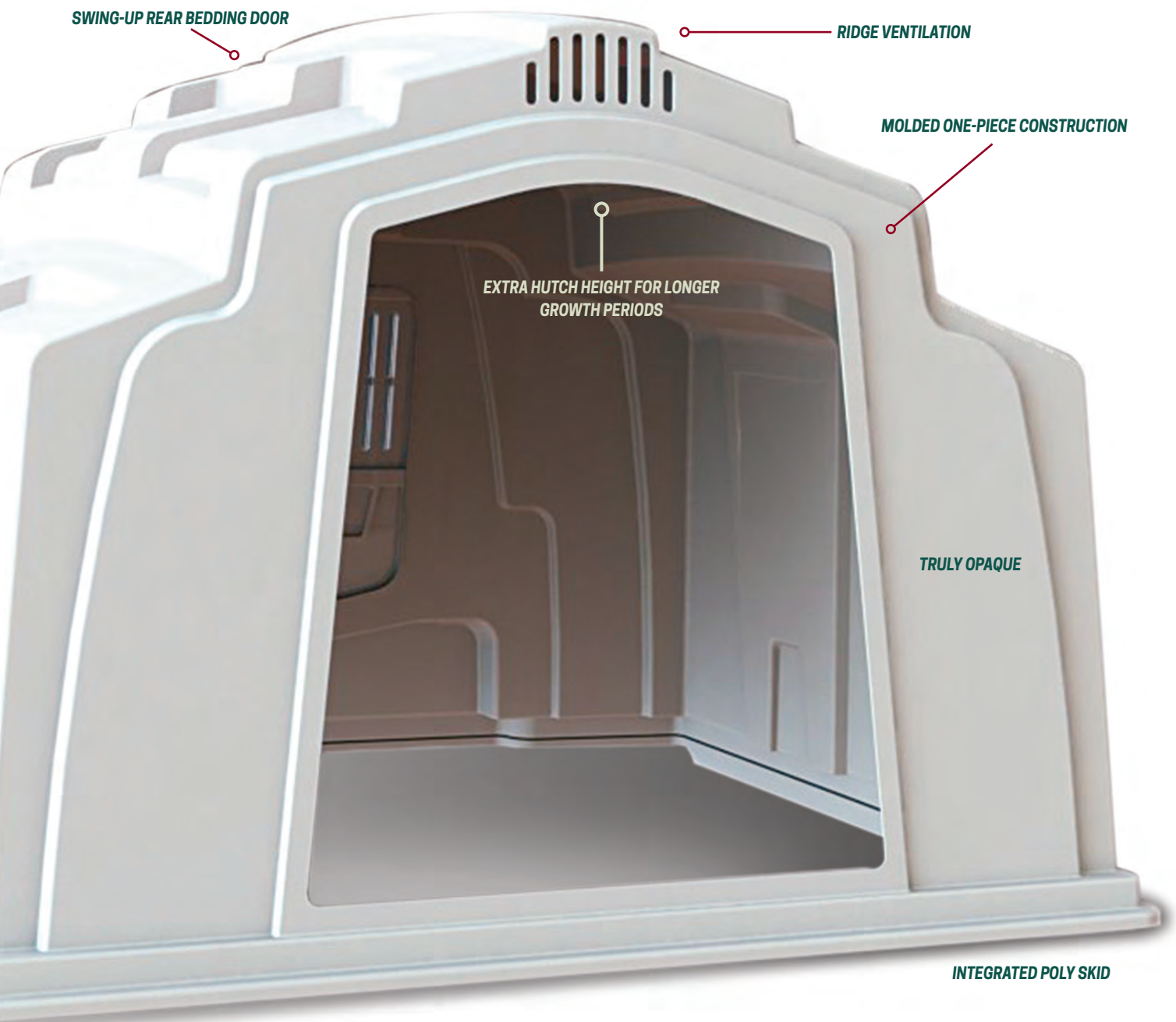
REAR VENTILATION



REAR TOP ROTARY VENT



Agri-Plastics Group Hutches transition weaned calves to group conditions with ease.



WHAT SETS OUR GROUP HUTCHES APART

Our group housing is designed by dairy farmers, for dairy farmers. That means our innovations come directly from the farm to solve the problems you and your crew face every day. From the strong one-piece construction and integrated poly skids to rear rotary vents and a swing-up rear bedding door, our hutches are designed to reduce stress among calves and crew members alike.



ROLLING GROUP FEEDING PENS

Efficiency, Ease and Savings

Cut down labor costs with the Rolling Group Feeding Pen—simply roll the fence back and forth to make cleaning easier and more efficient. With tough aluminum side panels and three mounted troughs, these pens are ideal for calves from 2 to 10 weeks of age. An optional Milk Bar is available to serve multiple calves at one time.

- Pen rolls back and forth for easy cleaning
- Side panels feature a tough aluminum construction
- Recommended for calves 2 to 10 weeks old
- Includes three troughs
- Optional Milk Bar available

OPTIONS:

10

Transition Pen System

Moving or disassembling group transition pens should be quick and easy. That's why Agri-Plastics designed our Transition Pen System to pin together simply at the corners. The side panels are made from aluminum to withstand tough conditions, so you don't have to sacrifice longevity for a product that's easy to use. Choose from the Standard or XL sizes to fit the needs of your herd.

- Corners quickly pin together for simple disassembly and moving
- Economical, sealed plastic feed trough reduces waste
- Aluminum side panels contribute to a quality design
- Recommended for weaning up to 20 weeks of age
- Water bucket is not included

PENS ROLL BACK AND FORTH FOR EASY CLEANING



TRANSITION PEN SYSTEM



XL TRANSITION PEN SYSTEM

Agri-Plastics Rolling Group Feeding Pens cut down cleaning time and labor.



11



WHAT SETS OUR ROLLING PENS APART

Cut down on labor requirements without short-changing your calves with our efficient rolling pens. Cleaning is fast and simple—just roll the fence back and forth to get the job done quickly while causing minimal stress to your calves.



STARTER PENS*

SELECTION GUIDE

Starter Pen

The Starter Pen from Agri-Plastics is designed for getting your calves off to a healthy start. These units are just for short term use before moving your calves to your Calf Hutches, larger Indoor Pens, Group Housing or Robotic Feeding set-ups.

Optional Accessories for All Starter Pen Models Include:

- Bottle holder
- Milk bottle
- Teat bucket
- Pail ring
- Starter bowl
- Bucket

Elevated Starter Pen

12 For optimal drainage, the Elevated Starter Pen is made with a slatted floor that sits above the ground on galvanized metal legs.

Movable Starter Pen

Easily change the position of the Movable Starter Pen using the two swivel wheels with brakes and two rigid wheels that are mounted directly to the slatted floor.

* Patent Pending



STARTER PEN



ELEVATED PEN



MOVABLE PEN

STANDARD FEATURES

SLAM LATCH



REAR VENTS



FLIP TO CLEAN



EASY LIFTING



YOUR CHOICE OF



**TEAT BUCKET
FRONT FEEDING**



**BOTTLE FRONT
FEEDING**

Agri-Plastics Starter Pens are designed to get your calves off to a healthy start.



WHAT SETS OUR STARTER PENS APART

By giving your newest calves housing designed specifically to meet their needs, you can help your calves get off to a great start. Our Starter Pens are made with slatted floors to help improve ventilation and are easy to flip to clean for proper hygiene.



FLEX-PEN^{*}

STAND-ALONE HOUSING

Stressless Transitions

Your calves are a valuable investment. Protect them from stress with the exclusive Flex-Pen System from Agri-Plastics. The system is a first in the marketplace that can transform from single to group housing—and back again—simply by detaching the side panels. This innovative, stand-alone solution allows calves to be housed individually, then grouped together when health permits.

We have two choices of Flex-Pen Systems to suit your operation. Choose from the Wire Back option that has an integrated rear bedding door for easy access and viewing of calves, or the Rear Rotary Back that has multiple airflow settings for different barn types and weather.

Additional Flexible Features include:

- Adjustable bucket heights
- Interchangeable front and rear doors
- Meets European housing standards
- Compatible with robotic feeding setups
- Molded from heavy-gauge plastic that is easy to clean and lightweight
- Reinforced steel frame inside the front panel for sturdiness

* Patent Pending

FLEX-PEN WIRE BACK



FLEX-PEN SYSTEM



STANDARD FEATURES

SLIDE 'N' GO



DIVIDER



LOCK BLOCK



SLAM LATCH



REAR BEDDING DOOR



REAR ROTARY VENT



Agri-Plastics Flex-Pen makes transitions easier for calves and operator.



15



WHAT SETS OUR FLEX- PENS APART

By allowing your calves to be housed individually or in groups without stressful moves, the Flex-Pen System is made to reduce stress on your calves, so they can grow healthy and strong. Protect your investment with Agri-Plastics and its innovative stand-alone housing solution, the Flex-Pen.



DROP-IN-GO^{*}

& INDOOR PENS

You can assemble and dismantle each unit in just minutes thanks to an interlocking tongue-and-groove system for flexible adjustments to your operational setup. Mount the units back-to-back to optimize spacing of calves in cramped livestock buildings.

At Agri-Plastics, our systems are designed to keep your investments healthy with features like separate water and feed buckets that prevent contamination. The easy-to-clean, lightweight design discourages the growth of bacteria and the spread of disease. In addition, heavy-duty Front Feeding Doors are reinforced with a steel frame to withstand punishing conditions.

The system is available in standard and wire back models to protect your interests—the health of your calves.

16

Molded Calf Dividers

prevent calves from cross suckling to stop diseases from spreading through your herd.

Adjustable Front Door

grows as your calf grows for optimal calf comfort and development. Adjusts to three heights.

Euro-Models

are available which have been designed to European standards.

* Patented and Patents Pending

STANDARD FEATURES

ADJUSTABLE FRONT DOOR



REAR ROTARY VENT



CALF DIVIDER



STEEL FRAME



DROP-IN-GO PEN



DROP-IN-GO WIRE BACK PEN



Agri-Plastics Indoor Calf Pens are the flexible way to shelter your investment.



DROP-IN-GO PEN SYSTEM

ADJUSTABLE FRONT DOOR

17

WHAT SETS OUR INDOOR PENS APART

Every operation is different, so our indoor pens offer various customizable features—from interchangeable front and rear doors on the Flex-Pen to multiple setup options on the Drop-In-Go—so you can customize pens to your operation and your calves' changing needs. Each of our indoor models is also designed for easy calf viewing, so you can keep a close eye on your investments.



HOUSING VENTILATION

PRE-ENGINEERED VENTILATION TUBE SYSTEMS

Proper airflow is a major concern for calves housed inside buildings, which is why we're introducing our newest product line—a series of ventilation systems for multi-season use, so you can invest in your herd's well-being year-round.

The FLIP DUCT® Ventilation System uses a fan located at one end of the barn to create positive pressure that pushes fresh air the entire length of the barn using a perforated tube. The patented internal membrane system features a warm weather and a cold weather side, so you can utilize the FLIP DUCT® all year long by simply rotating to the side you need.

The **Pre-Engineered tubes** are made to fit your barn's pen layout, so your calves receive proper ventilation - without unhealthy drafts in the winter.

18

Account for changing weather in a snap using the **Rotating Collar System** and variable-speed fan.



WARM WEATHER

- Variable speed fan set to HIGH
- Air flows through LARGE holes
- Showers calves with cooling comfort
- Disperses flies; keeps bedding dry



COLD WEATHER

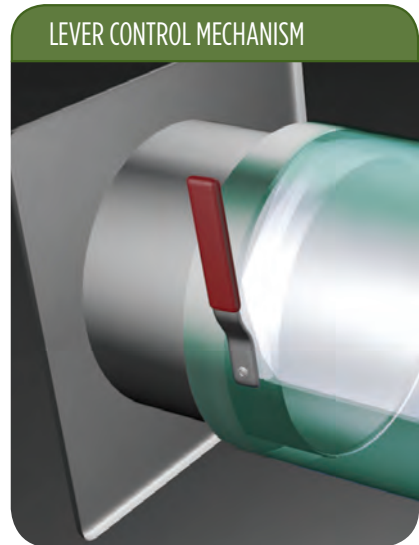
- Variable speed fan set to LOW
- Air flows through SMALL holes
- Gently delivers slow, non-drafty fresh air to calves



FLIP DUCT® and FLAP DUCT® Ventilation System keeps air flowing in any structure.

The FLAP DUCT® builds on the best features of the FLIP DUCT® Ventilation System to give producers even more control over ventilation requirements for a customized solution that shelters your biggest investment—your calves.

Agri-Plastics understands that individual setups often need individualized solutions. With FLAP DUCT®, the patented internal membrane can be adjusted up or down to adjust the airflow based on seasonal conditions with the simple flick of a lever. This system is particularly useful during the spring and the fall, when the days are warm and the nights cool. With the membrane in the up position, high speed air showers calves during warm weather. Simply move the lever down to adjust the membrane to the bottom of the tube to deliver slow, non-drafty fresh air during cold weather. Once installed, the membranes can be moved up or down to precisely control airflow based on your herd's needs in every season.



WARM WEATHER

- Variable speed fan set to HIGH
- Internal membrane rests at TOP of duct
- EASY lever control: It's a breeze to adjust to changing conditions

A diagram illustrating the ventilation system in a warm weather scenario. It shows a long aisle in a calf housing structure with two green FLAP DUCT units mounted on the ceiling. Red arrows indicate high-speed air being blown downwards from the ducts onto the calves. An inset image shows a close-up of the duct with the red lever in the up position and red arrows pointing downwards through the top of the duct.

COLD WEATHER

- Variable speed fan set to LOW
- Air flows through SMALL holes
- Gently delivers slow, non-drafty fresh air to calves

A diagram illustrating the ventilation system in a cold weather scenario. It shows the same aisle in the calf housing structure. Blue arrows indicate a slower, gentler flow of air being delivered through small holes in the side of the green FLAP DUCT units. An inset image shows a close-up of the duct with the red lever in the down position and blue arrows pointing through the side holes.

ACCESSORIES

200L / 53 GAL MILK TRAILER



AGRI-204130

550L / 145 GAL MILK TRAILER



AGRI-204150

900L / 238 GAL MILK TRAILER



AGRI-207771

Agri-Plastics calf milk trailers all have a Honda 6.5 HP engine. It has a hot dipped galvanized frame with a torsion right axle. Each unit comes standard with a digital milk flow meter that can be calibrated for accuracy. They are easy to drain and keep clean. Built for rugged use.

BOTTLE



AGRI-1070 20RT
AGRI-1071 30RT

Choose from a 2 or 3 quart bottle with soft rubber teat.

For all housing products.

FENCE-MOUNT BOTTLE HOLDER



AGRI-2003

Fits a 2 or 3 quart bottle. Hangs on the front of the fence.

Fits on all of the fence models.

SL BOTTLE HOLDER



AGRI-2002

Fits a 2 or 3 quart bottle.

For SSL & SL Calf Hutch.

WIRE BOTTLE HOLDER



AGRI-7024

Easy to take on and off for cleaning.

For Starter & Flex-Pens.

TEAT BUCKET



AGRI-4009

For all housing products.

MILK BAR



AGRI-MB1

One calf 3L / 0.79 US Gallon.

MILK BAR



AGRI-MB1EL

One calf 8L / 2 US Gallon.

MILK BAR



AGRI-MB2C

Two calves / Two compartments
2.5L / 0.66 US Gallon.

MILK BAR



AGRI-MB5C

Five calves / five compartments
2.5L each / 0.66 US Gallon each.

MILK BAR



AGRI-MB6

Six calves 36L / 9.5 US Gallon.

MILK BAR TEAT REPLACEMENTS



AGRI-3025

Replacement Teats for Milk Bar products, sold in a 10 pack.

For all Milk Bar products.

HAY FEEDER



AGRI-2052 SL
AGRI-1052 EXL

Hangs on the inside of the hutch and includes side access

For SL & EXL Calf Hutches.

DOUBLE-SIDED HAY FEEDER



AGRI-7025 Flex-Pen
AGRI-3040 Drop-In-Go Pen

Galvanized Double-sided Hay Feeder.

For the Drop-In-Go & Flex-Pen Systems.

HANGING GRAIN FEEDER



AGRI-1132

Holds enough calf feed for 3 days, and it mounts onto our wire fence.

For all housing products.

EARLY STARTER BOWL



AGRI-1067

4" bowl for much faster calf starter intake during the first 2 weeks.

For all housing products.

BUCKET RING



AGRI-6005

For the Starter Pen.

BUCKET



AGRI-1049N

For all housing products.

DOUBLE FENCE MOUNT BUCKET HOLDER



AGRI-1048D

Fits on all wire fences.

SINGLE FENCE MOUNT BUCKET HOLDER



AGRI-1048S

WEATHER COVER



AGRI-4013

Protects feed from the elements.

For all housing products.

Options for the Drop-In-Go Indoor Pens



Options for the Flex-Pen



Galvanized wall bracket.
For the Flex-Pen System.



Used when the center panel is removed.
For the Flex-Pen System.

Options for the Calf Hutches



For SL & EXL Calf Hutch.



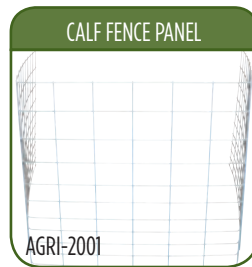
The Storm Door will stay open against the wire fence.
For the SL Calf Hutch.



Protects calves from the elements.
For all SL & EXL Hutches

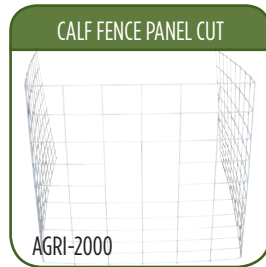


Keeps calves inside their hutches.
For all hutches.

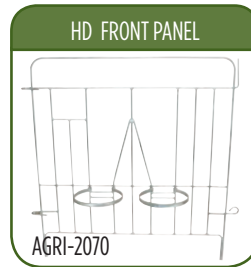


Made from 1/4" diameter hot dipped galvanized steel for sturdiness.
Measures 42" H x 72" D x 48" W

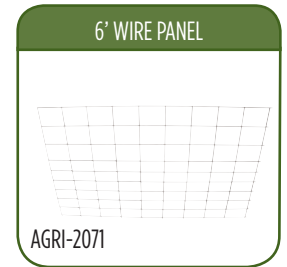
For all hutches.



For all hutches.



Includes pail rings.
For all hutches.



For use with the HD Front Panel.
For all hutches.



With quick release buckles.
For all housing products.



Comes in rolls of 250 and can be used to ID your calf hutch and calf.
For all housing products.



For all hutches.

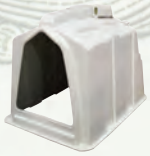


Includes metal bar, neck strap, chain and eye bolts for mounting.
For SL & EXL Calf Hutches.

4-IN-ONE SUPREME FENCE



HOUSING SPECIFICATIONS



SSL Calf Hutch (Space Saver)

Dimensions
Outside Dimensions
Inside Dimensions
Weight

Includes: Top Vent, Rear 3-In-One Door, and Bottom Airflow Vents.

AGRI-5001

Imperial
61" L x 45.5" W x 47" H
57" L x 41.5" W x 42" H
55 lbs.

Metric
155 cm L x 115.5 cm W x 119 cm H
145 cm L x 105 cm W x 107 cm H
25 kg



Deluxe SL Calf Hutch

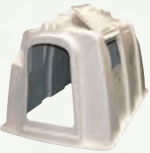
Dimensions
Outside Dimensions
Inside Dimensions
Weight

Includes: Side Door, 2 Buckets, Manger, Top Vent, Rear 3-In-One Door, and Bottom Airflow Vents.

AGRI-2016

Imperial
87" L x 49" W x 55" H
79" L x 44.5" W x 50" H
95 lbs.

Metric
221 cm L x 124 cm W x 140 cm H
201 cm L x 113 cm W x 127 cm H
43 kg



Deluxe EXL Calf Hutch

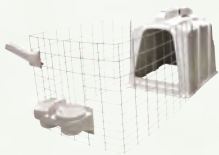
Dimensions
Outside Dimensions
Inside Dimensions
Weight

Includes: Side Door, 2 Buckets, Manger, Top Vent, Rear 3-In-One Door, and Bottom Airflow Vents.

AGRI-1045

Imperial
97.5" L x 62.5" W x 56" H
90.5" L x 56.5" W x 51" H
135 lbs.

Metric
248 cm L x 159 cm W x 142 cm H
230 cm L x 144 cm W x 130 cm H
61 kg



SSL Calf Hutch Rancher System

Dimensions
Outside Dimensions
Inside Dimensions
Fence Dimensions with Hutch
Weight (incl. Fence)

Includes: Top Vent, 3-In-One Rear Door, Bottom Airflow Vents, Outside Feed, 2 Buckets, and a Galvanized Wire Fence.

AGRI-5001RF

Imperial
61" L x 45.5" W x 47" H
57" L x 41.5" W x 42" H
125" L x 48" W
97 lbs.

Metric
155 cm L x 115.5 cm W x 119 cm H
145 cm L x 105 cm W x 107 cm H
317.5 cm L x 122 cm W
44 kg



SL Calf Hutch Rancher System

Dimensions
Outside Dimensions
Inside Dimensions
Fence Dimensions with Hutch
Weight (incl. Fence)

Includes: Top Vent, 3-In-One Rear Door, Bottom Airflow Vents, Outside Feed, 2 Buckets, and a Galvanized Wire Fence.

AGRI-2016RF

Imperial
87" L x 49" W x 55" H
79" L x 44.5" W x 50" H
150" L x 49" W
134 lbs.

Metric
221 cm L x 124 cm W x 140 cm H
201 cm L x 113 cm W x 127 cm H
381 cm L x 124 cm W
61 kg



EXL Calf Hutch Rancher System

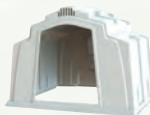
Dimensions
Outside Dimensions
Inside Dimensions
Fence Dimensions with Hutch
Weight (incl. Fence)

Includes: Top Vent, 3-In-One Rear Door, Bottom Airflow Vents, Outside Feed, 2 Buckets, and a Galvanized Wire Fence.

AGRI-1045RF

Imperial
97.5" L x 62.5" W x 56" H
90.5" L x 56.5" W x 51" H
158" L x 62.5" W
174 lbs.

Metric
248 cm L x 159 cm W x 142 cm H
230 cm L x 144 cm W x 130 cm H
401 cm L x 159 cm W
79 kg



Group Hutch

Dimensions
Outside Dimensions
Inside Dimensions
Weight

Includes: 3-In-One Swing Up Rear door, and Rear Top Rotary Vent.

AGRI-4033

Imperial
90" L x 106" W x 79" H
81" L x 100" W x 75" H
250 lbs.

Metric
229 cm L x 269 cm W x 200 cm H
296 cm L x 254 cm W x 191 cm H
113 kg

International Group Hutch

Outside Dimensions
Inside Dimensions
Weight

AGRI-4032

92" L x 98" W x 79" H
81.5" L x 92" W x 75" H
250 lbs.

234 cm L x 249 cm W x 200 cm H
207 cm L x 234 cm W x 191 cm H
113 kg

Rolling Group Feeding Pen

Dimensions
Outside Dimensions
Weight
Rolling Pen only. Includes 3 troughs and Lift Kit.

AGRI-4036

Imperial
96" L x 108" W
145 lbs.

Metric
243 cm L x 274 cm W
66 kg

Transition Pen System

Dimensions
Outside Dimensions
Weight
Pen only. Includes feed trough.

AGRI-1033

Imperial
192" L x 108" W
200 lbs.

Metric
488 cm L x 274 cm W
91 kg

XL Transition Pen System

Dimensions
Outside Dimensions
Weight
Pen only. Includes feed trough.

AGRI-1034

Imperial
192" L x 138" W
225 lbs.

Metric
488 cm L x 351 cm W
102 kg



Starter Pen

Dimensions
Outside Dimensions
Inside Dimensions

AGRI-6000B AGRI-6000T

Imperial
51.5" L x 40" W x 42.5" H
47" L x 34.5" W x 42" H

Metric
131 cm L x 102 cm W x 108 cm H
120 cm L x 88 cm W x 106 cm H



Elevated Starter Pen

Dimensions
Outside Dimensions
Inside Dimensions
Slatted Floor Outside Dimensions

AGRI-6013B AGRI-6013T

Imperial
51.5" L x 40" W x 42.5" H
47" L x 34.5" W x 42" H
55" L x 42" W x 9.25" H

Metric
131 cm L x 102 cm W x 108 cm H
120 cm L x 88 cm W x 106 cm H
140 cm L x 106 cm W x 23 cm H



Movable Starter Pen

Dimensions
Outside Dimensions
Inside Dimensions
Slatted Floor Outside Dimensions

AGRI-6014B AGRI-6014T

Imperial
51.5" L x 40" W x 42.5" H
47" L x 34.5" W x 42" H
55" L x 42" W x 9.25" H

Metric
131 cm L x 102 cm W x 108 cm H
120 cm L x 88 cm W x 106 cm H
140 cm L x 106 cm W x 23 cm H

Flex-Pen System

7' Panel AGRI-7007
Outside Dimensions
Inside Living Area

6' Panel AGRI-7006
Outside Dimensions
Inside Living Area

5' Panel AGRI-7005
Outside Dimensions
Inside Living Area

AGRI-7010B AGRI-7011T

Imperial
96" L x 48" W x 45" H
82" L x 46" W x 45" H

84" L x 48" W x 45" H
70" L x 46" W x 45" H

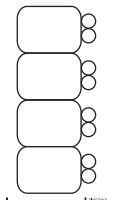
72" L x 48" W x 45" H
58" L x 46" W x 45" H

AGRI-7008WB AGRI-7008RR

Metric
244 cm L x 122 cm W x 114 cm H
208 cm L x 117 cm W x 114 cm H

213 cm L x 122 cm W x 114 cm H
178 cm L x 117 cm W x 114 cm H

183 cm L x 122 cm W x 114 cm H
147 cm L x 117 cm W x 114 cm H



7' Model: 96"/244 cm
6' Model: 84"/213 cm
5' Model: 72"/183 cm



Drop-In-Go Indoor Calf Pen System

7' Panel AGRI-3007
Outside Dimensions
Inside Living Area

6' Panel AGRI-3006
Outside Dimensions
Inside Living Area

5' Panel AGRI-3005
Outside Dimensions
Inside Living Area

4' Panel AGRI-3004
Outside Dimensions
Inside Living Area

AGRI-3003 Front Panel

Imperial
102" L x 50" W x 43" H
84" L x 46" W x 43" H

90" L x 50" W x 43" H
72" L x 46" W x 43" H

78" L x 50" W x 43" H
60" L x 46" W x 43" H

66" L x 50" W x 43" H
48" L x 46" W x 43" H

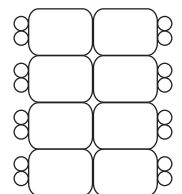
AGRI-3002 Rear Panel

Metric
259 cm L x 127 cm W x 109 cm H
213 cm L x 117 cm W x 109 cm H

229 cm L x 127 cm W x 109 cm H
183 cm L x 117 cm W x 109 cm H

198 cm L x 127 cm W x 109 cm H
152 cm L x 117 cm W x 109 cm H

168 cm L x 127 cm W x 109 cm H
122 cm L x 117 cm W x 109 cm H



7' Model: 195"/495 cm
6' Model: 171"/434 cm
5' Model: 147"/373 cm
4' Model: 123"/312 cm



Drop-In-Go Wire Back Indoor Calf Pen System

7' Panel AGRI-3007WB
Outside Dimensions
Inside Living Area

6' Panel AGRI-3006WB
Outside Dimensions
Inside Living Area

5' Panel AGRI-3005WB
Outside Dimensions
Inside Living Area

4' Panel AGRI-3004 WB
Outside Dimensions
Inside Living Area

AGRI-3048WB

Imperial
102" L x 50" W x 43" H
84" L x 46" W x 43" H

90" L x 50" W x 43" H
72" L x 46" W x 43" H

78" L x 50" W x 43" H
60" L x 46" W x 43" H

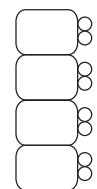
66" L x 50" W x 43" H
48" L x 46" W x 43" H

Metric
259 cm L x 127 cm W x 109 cm H
213 cm L x 117 cm W x 109 cm H

229 cm L x 127 cm W x 109 cm H
183 cm L x 117 cm W x 109 cm H

198 cm L x 127 cm L x 109 cm H
152 cm L x 117 cm W x 109 cm H

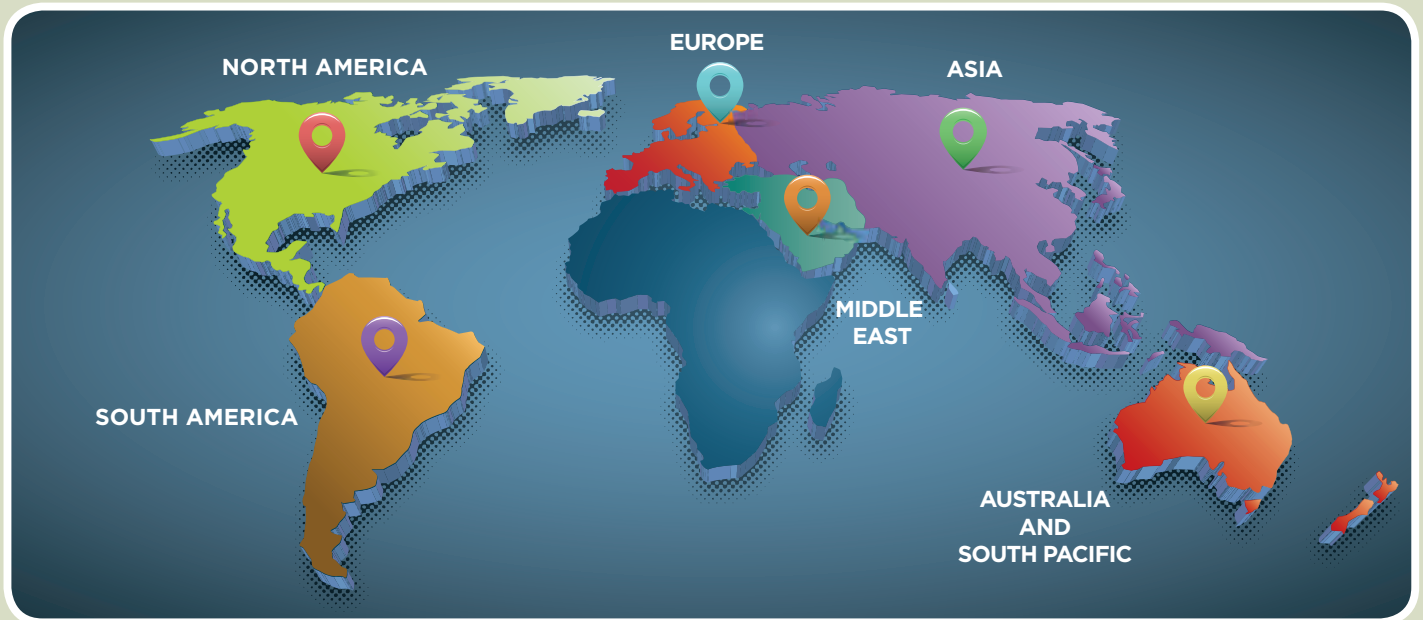
168 cm L x 127 cm W x 109 cm H
122 cm L x 117 cm W x 109 cm H



7' Model: 102"/259 cm
6' Model: 90"/229 cm
5' Model: 78"/198 cm
4' Model: 66"/168 cm



OUR REACH IS GLOBAL



Agri-Plastics Manufacturing is owned and operated by third-generation dairymen. It is through hands-on experience that Agri-Plastics develops and tests its products. Agri-Plastics' mission is to offer the best quality products for the farming industry by designing solutions that meet our customers' expectations, while establishing a worldwide reputation for reliability and durability.

AGRI-PLASTICS CORPORATE HEADQUARTERS

Plant #1
Agri-Plastics Mfg.
7793 Young Street
Grassie, ON
Canada
LOR 1M0
Tel: 1.905.945.3116
T.F.: 1.888.231.3575
info@calfhutch.com

Plant #2
Agri-Plastics Mfg.
695 Arvin Avenue
Stoney Creek, ON
Canada
L8E 5R2
Tel: 1.905.643.6278
T.F.: 1.888.231.3575
info@calfhutch.com

UNITED STATES SALES OFFICE

Agri-Plastics Mfg.
3731 Luker Road
Cortland, NY 13045
Tel: 1.607.591.0103
T.F.: 1.888.231.3575
info@calfhutch.com

EUROPE / S.AMERICA CIS / MIDDLE EAST SALES

Agri-Plastics International
Knock na Creva
Athenry Co. Galway
Ireland
Tel: +353 91 844071
intsales@agri-plastics.net

NZ / AUSTRALIA SALES OFFICE

Agri-Plastics Mfg.
21 Snowden Road
Hadlow 4RD
Timaru 7910
New Zealand
Tel: +64 21737474
info@calfhutch.com

AGRI-PLASTICS
The Calf Housing Specialist

www.calfhutch.com • info@calfhutch.com